

XJET CONCEPT

YOUR EXCLUSIVE OEM MOBILE



FUTURE IS OUR FOCUS

XJET CONCEPT

YOUR EXCLUSIVE OEM MOBILE

XJET is a mobile radiographic unit, designed for excellent performance capacity and responsiveness to the operative features in the field of general radiology, and especially in the following departments:

XJET è un'unità radiografica mobile ideata con ottime capacità prestazionali e reattività alle caratteristiche operative nel campo della radiologia generale, ed in particolare nei campi di:

*TRAUMATOLOGY/ Traumatologia
RESPIRATORY SYSTEM/ Sistema Respiratorio
SKELETAL SYSTEM/ Sistema Scheletrico
PEDIATRICS/ Pediatria
EMERGENCY ROOM/ Pronto Soccorso
INTENSIVE CARE/ Terapia Intensiva
OPERATING ROOM/ Sala Operatoria*

Thanks to its easy handling, it is possible to place the unit in the various hospital departments in case of impossibility of moving the patient

Grazie alla sua maneggevolezza è possibile posizionare l'unità nei vari reparti ospedalieri in caso di impossibilità di spostamento del paziente

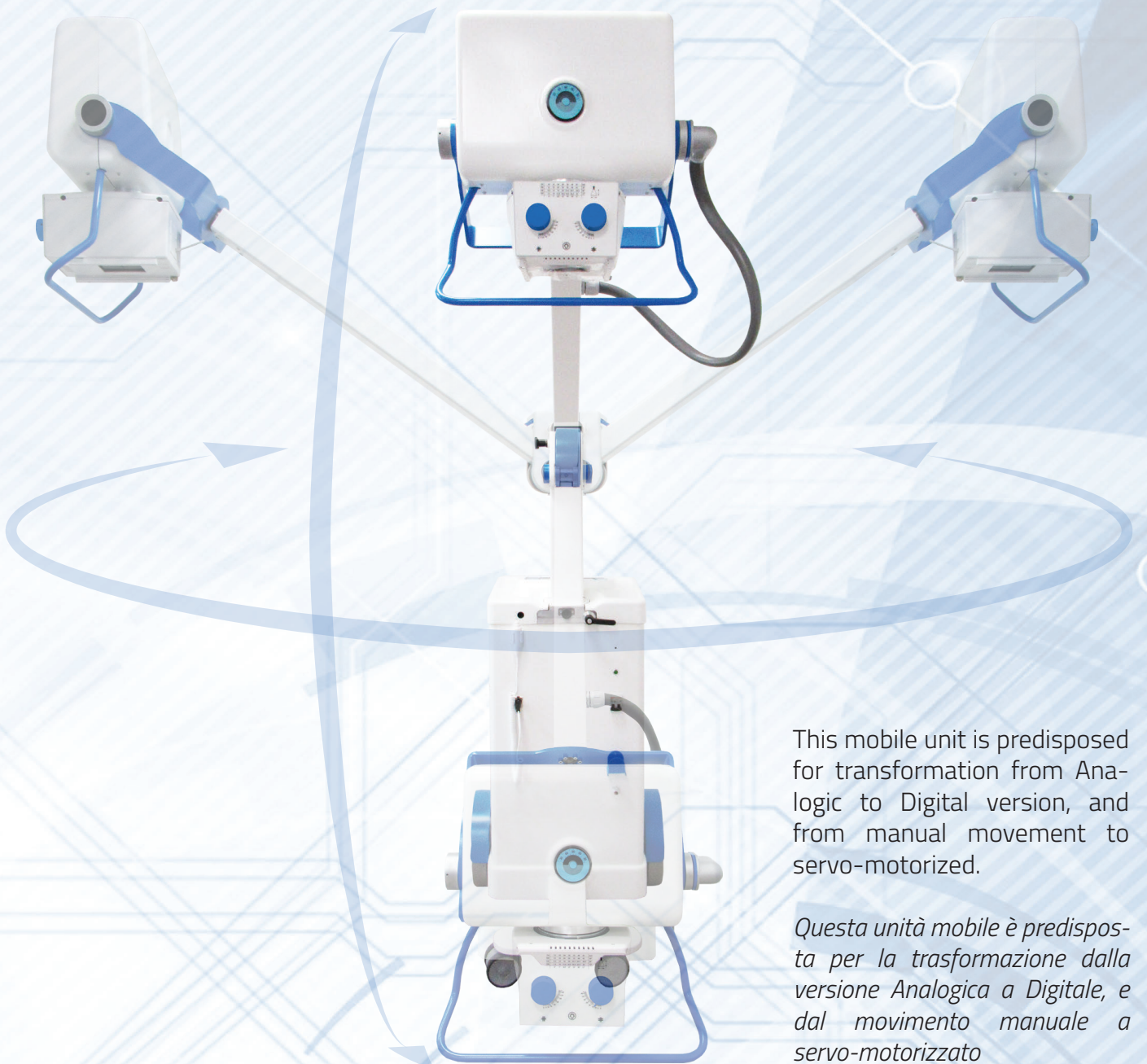


XJET CONCEPT

YOUR EXCLUSIVE OEM MOBILE

The XJET unit is available in powers 4KW÷50KW and in different configurations:
L'unità mobile XJET è disponibile in potenze 4KW÷50KW e in diverse configurazioni:

ANALOGIC/Analogic
DIGITAL/Digitale



This mobile unit is predisposed for transformation from Analogic to Digital version, and from manual movement to servo-motorized.

Questa unità mobile è predisposta per la trasformazione dalla versione Analogica a Digitale, e dal movimento manuale a servo-motorizzato

XJET CONCEPT

YOUR EXCLUSIVE OEM MOBILE



The digital version is equipped with a Wi-Fi panel detector 14x17(35x43) which is directly connected with a system of image acquisition. The use of the panel assures excellent results in terms of resolution and image quality.

La versione digitale è dotata di un rilevatore a pannello Wi-Fi 14x17 (35x43) direttamente connesso ad un sistema di acquisizione di immagini. L'uso del pannello garantisce ottimi risultati in termini di risoluzione e qualità delle immagini.

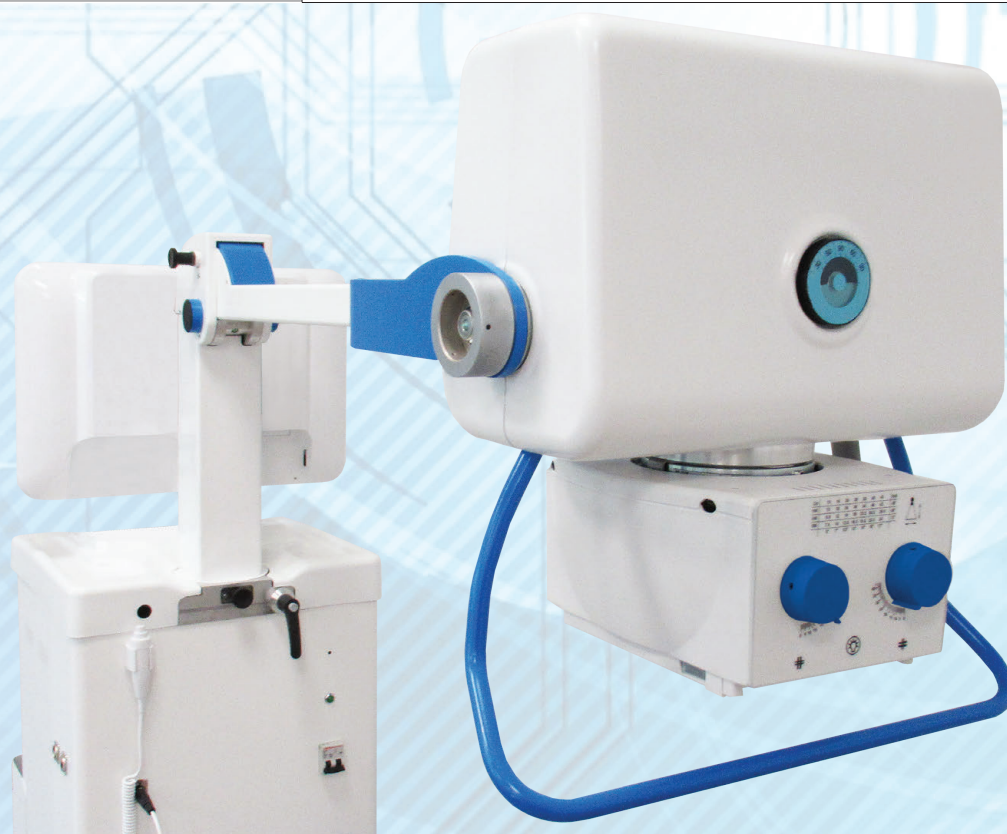
The standard panel detector is the WIRELESS model 14"x17" (35x43cm). As option 17"x17" (43x43cm).

Medical PC Panel of 19" as option 22"

Il pannello detettore di serie è il modello WIRELESS 14"x17" (35x43cm) Come opzione 17x17" (43x43cm)

Pannello PC medica da 19" opzionale da 22"

TECHNICAL FEATURES	FLAT PANEL 14x17 WIRELESS
Application	General radiography
Technology	a-Si TFT with photodiode
Scintillator Type	CsI (VAW: High MTF type), CsI (VAW PLUS: High DQE type)
Pixel Pitch	140um x 140um
Pixels	2,560 x 3,072 pixels
Active Area	358.4 x 430.08 (mm)
A/D Conversion	14 bit
Grayscale	16,384 steps
X-ray voltage range	40 ~ 150kVp
X-ray generator Interface	Line trigger : DR Trigger Mode Auto trigger : AED (Automatic Exposure Detection) Mode
Wireless Interface	IEEE 802.11a/b/g/n (2.4GHz/5GHz dual band)
Dimensions	460 (W) x 384 (L) x 15 (T) mm
Weight	Approx. 3.3kg (GADOX) / 3.4kg (CsI)
Operating Environment	Operational temperature: Min 0°C - Max 40°C Operation Humidity: Min 5% RH Max 90% RH
Power	DC24V, 0.5A (Wired Mode) / 7.4V 4,000mAh Lithium Ion Polymer Battery
Drop height	1m
Ingress Protection Rating	IP67
Battery	Built-in battery exchangeable
Battery Operating Time	stand by 8h
Load Limit	uniform load 400kg, local load 200kg
Operation shock & vibration	20g - 2G
Storage & Transport Shock & vibration	30g - 5G



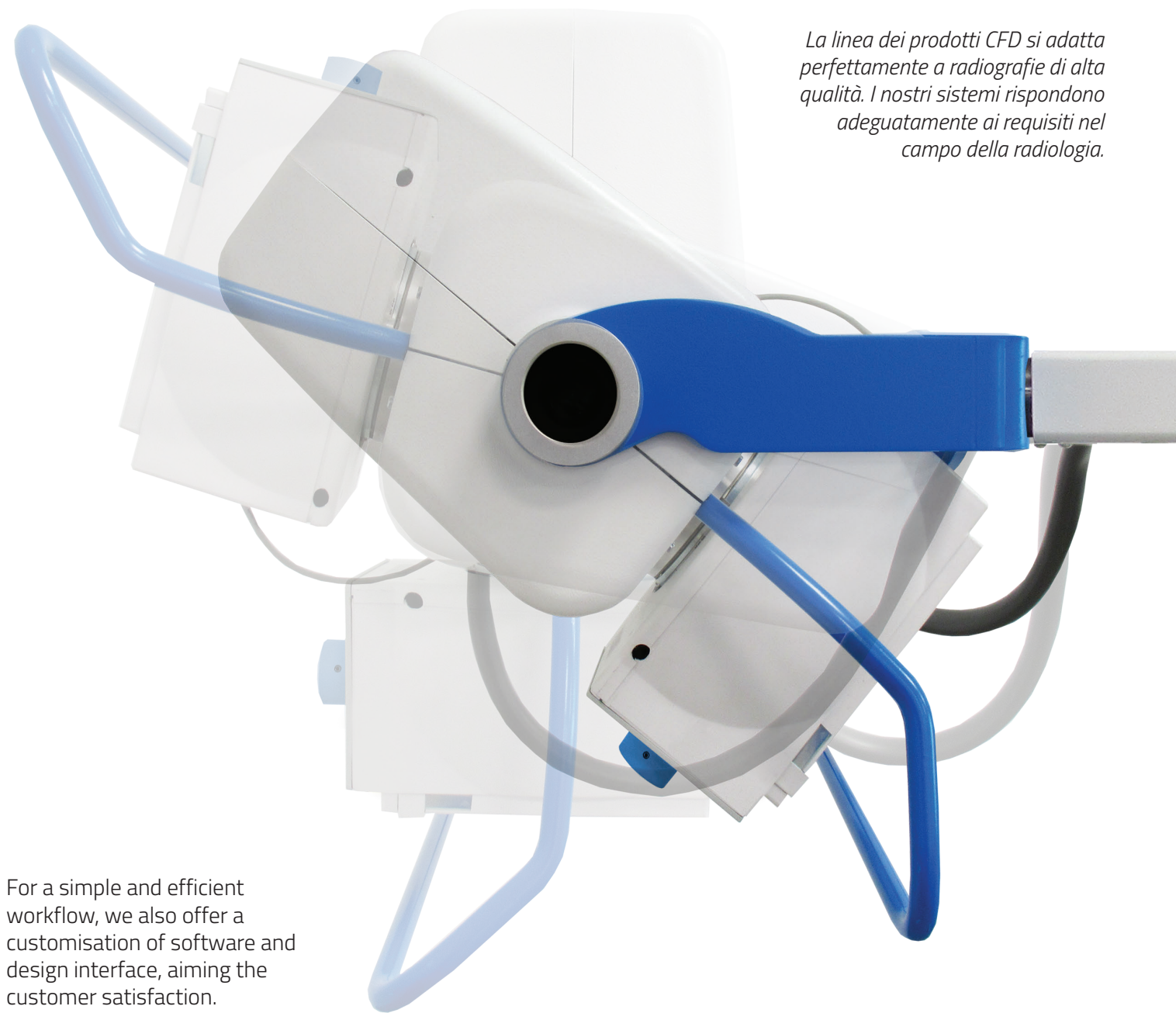
XJET CONCEPT

YOUR EXCLUSIVE OEM MOBILE

CUSTOMIZE SOFTWARE AND DESIGN

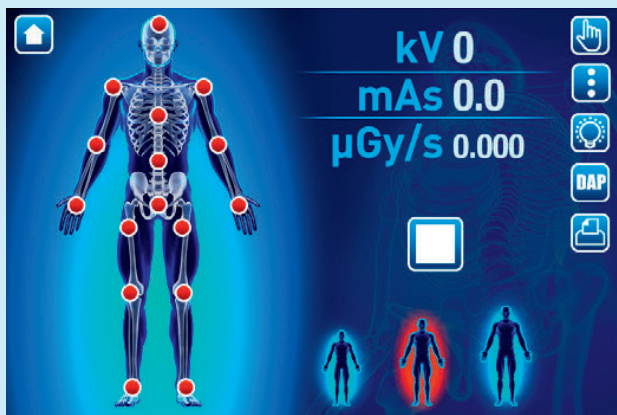
CFD X-ray equipment product line is perfectly suited to high-quality radiographs. Our systems are the most appropriate answer to the various questions in the X-ray field.

La linea dei prodotti CFD si adatta perfettamente a radiografie di alta qualità. I nostri sistemi rispondono adeguatamente ai requisiti nel campo della radiologia.



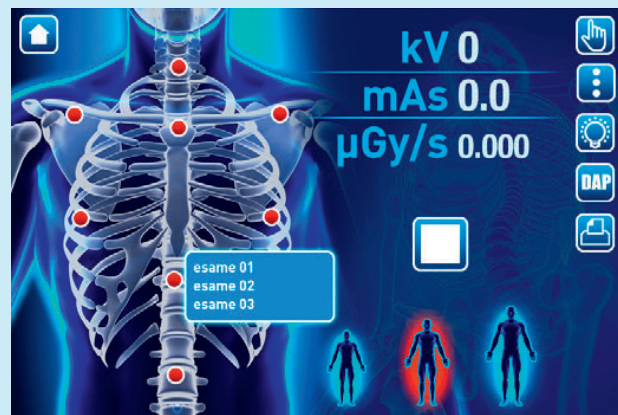
For a simple and efficient workflow, we also offer a customisation of software and design interface, aiming the customer satisfaction.

Per un ciclo di lavoro semplice ed efficiente e soddisfazione del cliente, offriamo anche la personalizzazione del software e del design interfaccia.



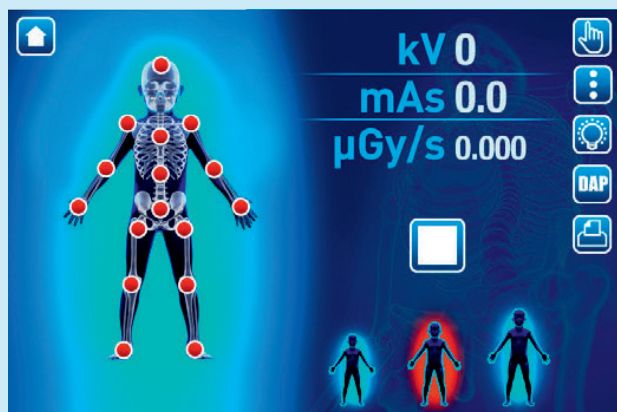
Colour Touch screen 9", control technology with various languages.

Touch screen 9" a colori con varie lingue.



Dynamic anatomic configuration, with thousands possible combinations.

Configurazione anatomica dinamica con migliaia di combinazioni possibili.



Supported two and three point radiological parameters.
DAP Predisposition.

*Supporta parametri radiologici con tecnologia a 2 e 3 punti.
Predisposizione DAP.*

TECHNICAL FEATURES	XJET 4KW FIXED ANODE	XJET 6KW FIXED ANODE
input voltage	115/230Vac single phase standard \pm 10%	115/230Vac single phase standard \pm 10%
maximum output power	4KW (100 kV - 40mA - 100mS)	6KW (100 kV - 60mA - 100mS)
frequency	40 kHz Fixed	40 kHz Fixed
kV range	40 \div 110kV (120 kV OPT) in step of 1kV	40 \div 110kV (120 kV OPT) in step of 1kV
mA range	25 - 100 mA associated automatically to kV	25 - 125 mA associated automatically to kV
mAs range	0.2 \div 320	0.2 \div 320
operating methods	2/3 points technique	2/3 points technique
exp. Time range	2 ms \div 6.3 sec in reason of mAs set	2 ms \div 6.3 sec in reason of mAs set
Class of device (93/42/EEC)	IIb	IIb

TECHNICAL FEATURES	XJET 8KW FIXED ANODE	XJET 16KW ROTATING ANODE
input voltage	115/230Vac single phase standard \pm 10%	115/230Vac single phase standard \pm 10%
maximum output power	8KW (100 kV - 80mA - 100mS)	16KW (100 kV - 160mA - 100mS)
frequency	40 kHz Fixed	40 kHz Fixed
kV range	40 \div 110kV (120 kV OPT) in step of 1kV	40 \div 125 kV (130 kV OPT) in step of 1kV
mA range	25 - 200 mA associated automatically to kV	50 - 400 mA associated automatically to kV
mAs range	0.2 \div 320	0.2 \div 320
operating methods	2/3 points technique	2/3 points technique
exp. Time range	2 ms \div 6.3 sec in reason of mAs set	1 ms \div 6.3 sec in reason of mAs set
Class of device (93/42/ECC)	IIb	IIb

TECHNICAL FEATURES	XJET 32KW ROTATING ANODE	XJET 40KW ROTATING ANODE
input voltage	115/230Vac single phase standard \pm 10%	115/230Vac single phase standard \pm 10%
maximum output power	32KW (100 kV - 320mA - 100mS)	40KW (100 kV - 400mA - 100mS)
frequency	40 kHz Fixed	40 kHz Fixed
kV range	40 \div 125kV (130 kV OPT) in step of 1kV	40 \div 125kV (130 kV OPT) in step of 1kV
mA range	50 - 500 mA associated automatically to kV	50 - 630 mA associated automatically to kV
mAs range	0.2 \div 320	0.2 \div 320
operating methods	2/3 points technique	2/3 points technique
exp. Time range	1 ms \div 6.3 sec in reason of mAs set	1 ms \div 6.3 sec in reason of mAs set
Class of device (93/42/ECC)	IIb	IIb

TECHNICAL FEATURES	XJET 50KW ROTATING ANODE
input voltage	115/230Vac single phase standard \pm 10%
maximum output power	50KW (100 kV - 500mA - 100mS)
frequency	40 kHz Fixed
kV range	40 \div 125kV (130 kV OPT) in step of 1kV
mA range	50-800 mA associated automatically to kV
mAs range	0.2 \div 320
operating methods	2/3 points technique
exp. Time range	1 ms \div 6.3 sec in reason of mAs set
Class of device (93/42/EEC)	IIb



Thanks to the OEM working mode,
we can add customer's Logo.

*Grazie alla modalità di lavoro in OEM,
possiamo aggiungere il Logo dei clienti .*

Customers can choose their own
company colors to customize
their unit.

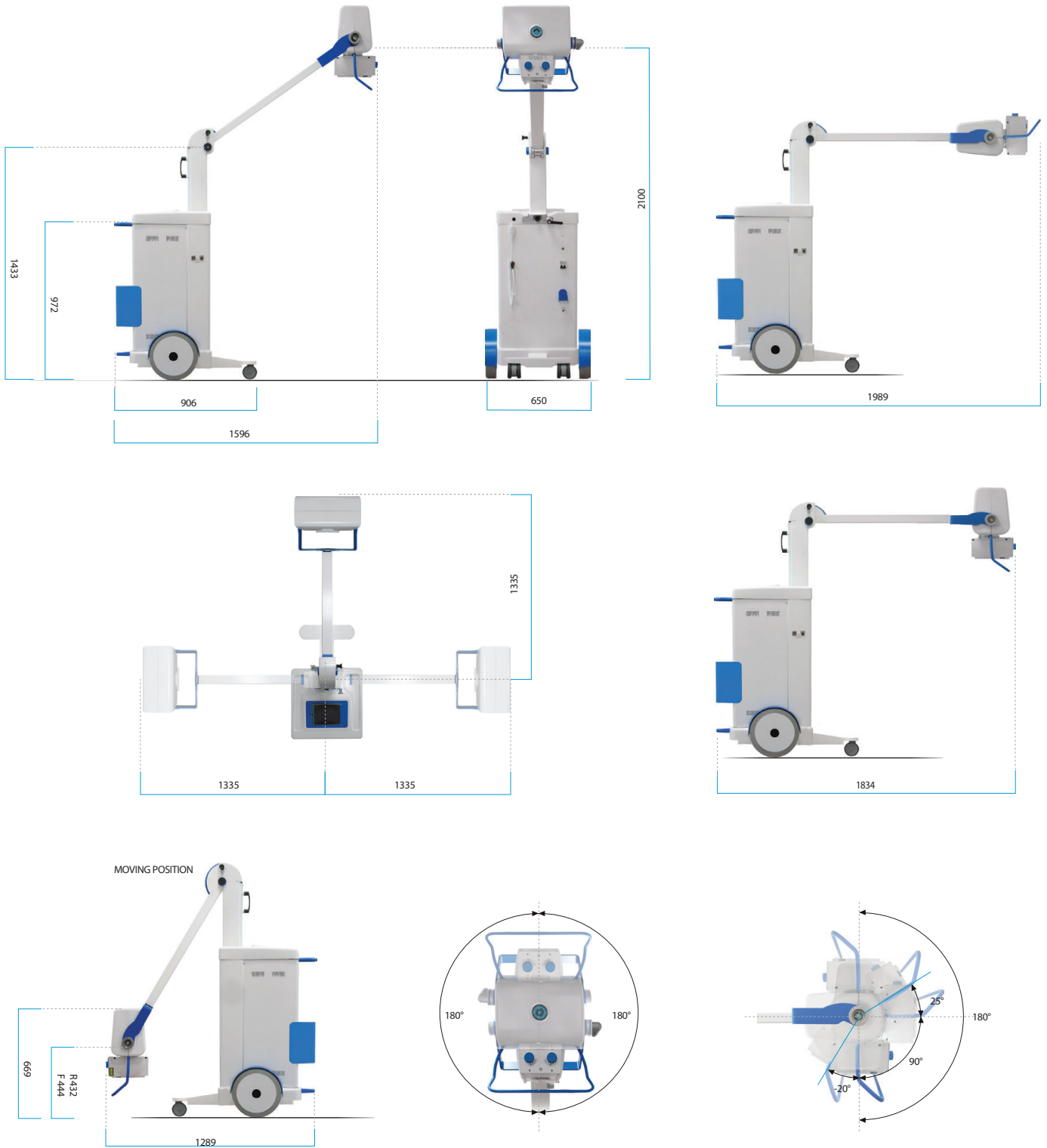
*I clienti possono scegliere i colori della
propria azienda per personalizzare la
loro unità.*



XJET CONCEPT

YOUR EXCLUSIVE OEM MOBILE

MECHANICAL SIZES - DIMENSIONI MECCANICHE



Max Weight: 285 kg - Peso Massimo: 285 kg



Monobloc type Tube:

Fixed and rotating anode
Fixed anode 4-6-8-KW
Rotating anode 16-32-40-50KW



Constant monitoring of the monobloc temperature

Fixed and rotating anode
Fixed anode 4-6-8-KW
Rotating anode 16-32-40-50KW



High frequency Generator

40kHz



Wi-Fi connection

digital panel



Ergonomic mechanics



USB connection upgrade

SW & FW



OPTIONAL

Full DICOM compliance
CD/DVD (only for digital)
DAP (dosimeter)

X JET CONCEPT

YOUR EXCLUSIVE OEM MOBILE

All configurations
can be motorized

*Tutte le configurazioni
possono essere
motorizzate*



FUTURE IS OUR FOCUS





FUTURE IS OUR FOCUS

HEADQUARTER: Via Aldo Moro, 9 - 24020 Scanzorosciate (BG) - ITALY
Tel.: +39 035 581426 - Fax +39 035 4239883 - mail: info@cfd-devices.com